

TRUST

YOUR PATIENTS TRUST YOU. CAN YOU TRUST YOUR SELF-ETCH?



new product

PEAK™ Self-Etch Adhesive System



Peak SE Primer is a self-etching primer delivered in the unique JetMix syringe. It works specifically with Peak LC Bond Resin to achieve unsurpassed bond strengths.

- JetMix syringe-in-syringe technology thoroughly mixes the chemistry ensuring freshness and stability
- JetMix technology prevents the hydrolytic breakdown that occurs with self etch chemistries by keeping the acid and hydrophilic resin components apart until the clinician activates them
- Syringe/tip delivery provides precise placement, eliminating the need for mixing wells and brushes and removing extra steps with an easy one-coat technique



Peak LC Bond Resin is a syringe-delivered, light-cured, resin bonding adhesive. It is uniquely designed to be used either following conditioning with Peak SE Primer or Ultra-Etch phosphoric acid for a total etch technique.

- High bond strengths to both dentin and enamel ensure quality results
- Nano filler offers optimal viscosity and unsurpassed bond strength
- Resin cures with all lights
- Unique chemistries virtually eliminate post-op sensitivity
- Syringe delivery offers easy dispensing and the convenience of unit-dose delivery without waste



Bond/Etch

Peak Self-Etch Adhesive System PQ1 PermaQuick PQ Amalgam
Ultra-Etch Porcelain Etch & Silane Ultra-Blend plus
Porcelain Repair Kit Consepsis EtchArrest

SELF-ETCH CONVENIENCE. TOTAL-ETCH PERFORMANCE.

Independent university research establishes Peak's superiority in etching and bonding. Peak's patented JetMix syringe separates precise quantities of strong 1.2pH acid and optimized priming resin. The JetMix syringe assures the freshness, consistency, and strength of Peak's chemistry. Alternatively, the chemistries of other self-etch systems are compromised because they are mixed together at the factory and degrade over time.

HIGHEST BOND STRENGTH TO DENTIN AND ENAMEL!

ADR Abstract ID #0825¹

Bond Strengths of Self-Etching Bonding Systems to Dentin and Enamel - R.B. PRICE, M. MCLEOD, and C.M. FELIX, Dalhousie University, Halifax, Canada

CUT ENAMEL

BONDING SYSTEM	BOND STRENGTH (MPa)	TECHNIQUE
Ultra-Etch + Peak LC	40.7 ^a	TE
Peak SE + Peak LC	38.3 ^{a,b}	SE
Ultra-Etch + PQ1	37.3 ^b	TE
Clearfil SE Bond	33.4 ^c	SE
Prompt L-Pop	32.9 ^c	SE

The same letters (a,b,c) indicate statistical similarity.

DENTIN

BONDING SYSTEM	BOND STRENGTH (MPa)	TECHNIQUE
Peak SE + Peak LC	35.7 ^a	SE
Ultra-Etch + Peak LC	35.5 ^a	TE
Clearfil SE Bond	35.1 ^a	SE
Ultra-Etch + PQ1	33.7 ^a	TE
Prompt L-Pop	25.0 ^b	SE

TE = Total-etch Technique (Etch + Prime)

SE = Self-etch Technique

University Study. August 2007²

PEAK™ SE



Micrograph of cut enamel treated with Peak SE primer. Note the keyhole appearance of the etched enamel rods.

Clearfil™ SE



Micrograph of cut enamel treated with Clearfil SE Bond.

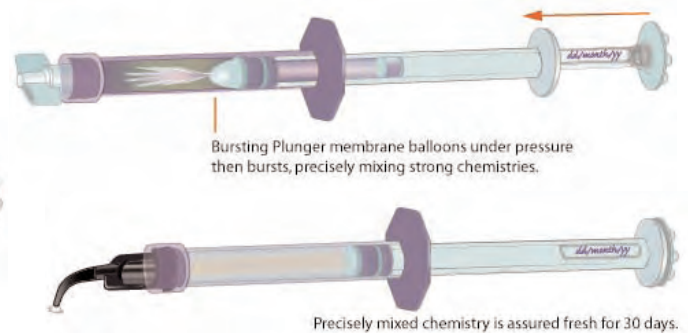
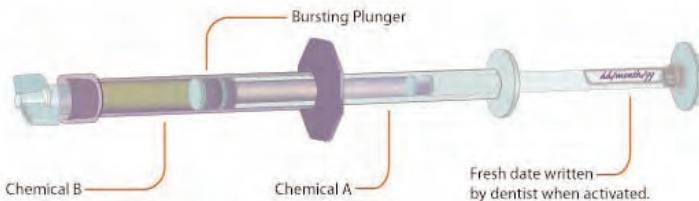
Adper™ Prompt™ L-Pop™



Micrograph of cut enamel treated with Adper Prompt L-Pop.

Trust Peak's JetMix™ Syringe

Always fresh. Always consistent. Always strong.



#5134 - Peak SE Intro Kit

- 1 - 1.0ml Peak SE Primer
- 1 - 1.2ml Peak LC Bond Resin
- 20 - Black Mini Brush tips
- 20 - Inspiral Brush tips



#5130 - Peak LC Bond Intro Kit

- 1 - 1.2ml Peak LC Bond Resin
- 1 - 1.2ml Ultra-Etch
- 20 - Blue Micro tips
- 20 - Inspiral Brush tips

#5135 - Peak SE Primer 4pk

- \$63.99 ea
- \$60.79 ea 3/more
- \$57.59 ea 5/more



Peak LC Bond Resin

#5133 - 4pk



#5132 - 20pk

Shelf Life: 18 months. Refrigerate if not used on a daily basis.

PQ1®

SINGLE RESIN BONDING

HIGHEST FILLED RESIN!



- High bond strength helps prevent microleakage—61.25MPa
- Unsurpassed filler penetration into dentin tubules helps minimize sensitivity
- Radiopaque
- Ethyl alcohol solvent carrier
- Cures with all lights²
- Use for light cure indirect bonding



PQ1's unique and patented chemistry bonds to dentin/enamel, cast metal³, porcelain, amalgam³ and composite. PQ1 is also effective for indirect procedures where light curing is possible.

#615 - PQ1 Kit

- 2 - 1.2ml PQ1 syringes
- 2 - 1.2ml Ultra-Etch syringes
- 20 - Blue Micro tips
- 40 - Inspiral Brush tips



PQ1 1.2ml Syringes

#641 - 4pk

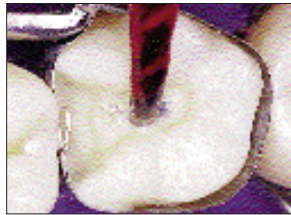
#1806 - 20pk



Shelf Life: 18 months. Refrigerate if not used on a daily basis.



ETCH

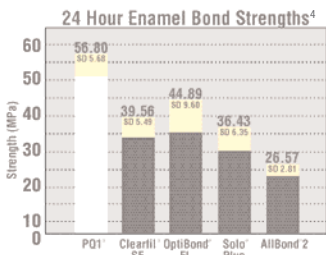
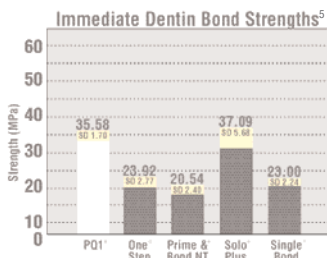
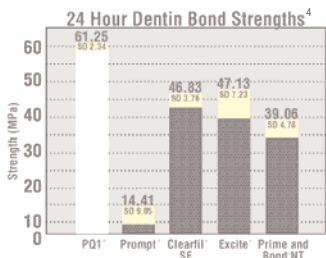


PRIME/BOND IN ONE!



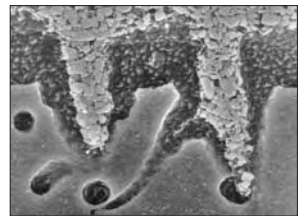
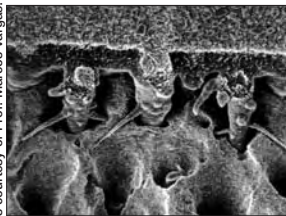
FINISHED RESTORATION!

UNBEATABLE!
Best Single-Part Adhesive
ZAPS SENSITIVITY!
61.25 MPa!



Patients begin functioning on restorations shortly after they are inserted. It has become a standard to test dentin bond strengths 24 hours after bonding. PQ1 performs exceptionally well when testing is done almost immediately (20 minutes after bonding) as demonstrated in this graph.

FeSEM's courtesy of Prof. Marcos Vargas.



Note unsurpassed filler penetration for high strength bonding!

"Ultradent has a reputation for excellent products which can be delivered in a convenient, user-friendly manner. For direct resin, the new PQ1 adhesive scores on both counts."
 - Dr. Ronald Jackson

"After working with PQ1 in both laboratory bond evaluation setting and with direct patient care, I am impressed with its potential bond values, physical properties and ease of use."
 - Dr. Jeff Brucia

PQ1, highest single component bond strength. Beats competitors' bonding agents, even with their own composites.*** Nine out of ten dentists reported lower sensitivity.⁶

1 www.realityesthetics.com 2 Not recommended with argon lasers. 3 We recommend PQ1 Amalgam for highest bond strength with amalgam placement and to sand blasted cast metal. 4 Shear Bond Comparison PQ1 Immediate to Dentin. Ultradent Products, Inc 2001 (Lit #14) 5 Post Operative Tooth Sensitivity, Clinical Research Associates Newsletter 1999 Nov; 23(11):3. 6 Shear Bond Comparison top 5 Bonding Agents. Ultradent Products, Inc 2001 (Lit #11) U.S. Patent Nos: 4,997,371; 5,269,684; 5,534,562; and 5,708,052. International Patents Granted and Pending.

PermaQuick®

TWO-PART RESIN BONDING SYSTEM

UNBEATABLE TWO RESIN BONDING!

- Long shelf life—40 months!
- Primer actually improves with age
- Ethyl alcohol solvent carrier
- No acetone
- Tissue-kind primer; natural resins with a 1.82pH; elastic when polymerized



The PermaQuick Bonding System utilizes three components: Ultra-Etch has shown to be unsurpassed for optimum dentin and enamel conditioning.¹ PermaQuick Primer has a one-of-a-kind chemistry. The tissue-kind ethyl alcohol neutral pH primer contains natural light-polymerizable resins that help facilitate penetration into hydrophilic dentin substrates. Minimal film thickness, great for indirect bonding. PermaQuick Bonding Resin is a 45% filled, radiopaque, light cure bonding resin. PermaQuick Bonding Resin is also used alone as an enamel bonding resin. Bonds to dentin/enamel, cast metal², porcelain, amalgam² and composite.

LIGHT CURE INDIRECT



Etch and prime application, light cure. Apply PermaQuick bond resin to preparation. DO NOT LIGHT CURE! Apply luting resin to veneer. Seat veneer. Then light cure bond resin and luting resin simultaneously.

Strongest two-resin system!
Highest bond strength to chemical cure composite.*
HIGHEST BOND STRENGTH PERIOD!
 (78.0 MPa highest of set)
65.88 MPa

- #633 - PermaQuick Primer 1.2ml Syringes 4pk
- #634 - PermaQuick Bonding Resin 1.2ml Syringes 4pk



Shelf Life: 40 months. Refrigerate if not used on a daily basis.

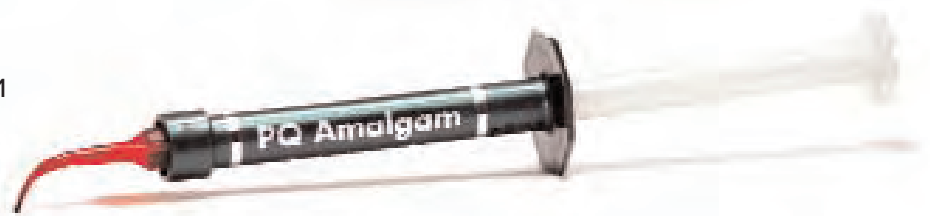
* Due to film thickness issues, use PermaFlo DC Primers for luting with chemical cure luting resins (e.g. PermaFlo DC) when light cure cannot cure all areas. Shear Bond Evaluation 24 Hour PermaQuick to Dentin. Ultradent Products, Inc. 1999 (Lit # 15) 2 Use PermaFlo DC Primers for luting with PermaFlo DC when light cure cannot cure all areas. U.S. Patent Numbers: 4,997,371; 5,269,684; 5,534,562; and 5,708,052. Other U.S. and Int'l Patents Granted and Pending.

PQ Amalgam

SINGLE SYRINGE BONDING SYSTEM

- 40% filled resin
- Natural resins
- Radiopaque

PQ Amalgam is a resin adhesive agent designed to be used under amalgam. PQ Amalgam will not replace the need for mechanical retention, but will help increase amalgam adhesion to dentin and enamel, as well as help reduce post operative sensitivity.



NOT AVAILABLE IN ALL COUNTRIES

- #1353 - PQ Amalgam 1.2ml Syringes 4pk



Shelf Life: 18 months. Refrigerate if not used on a daily basis.

Ultra-Etch®

ETCHANT

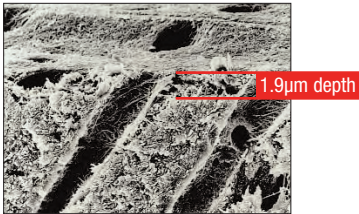
"Unsurpassed Dentin/Enamel Conditioner" Dr. Paul Lambrechts^{2,3}



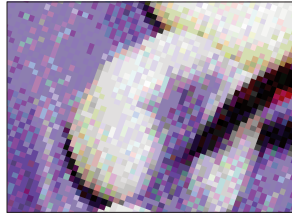
- Optimal viscosity
- Self-limiting in its depth of etch (average depth of 1.9µm with 15 second etch)³
- Flows into precise locations with Inspirial Brush or Blue Micro tips (even into occlusal grooves for sealant preparation)
- Designed for rapid and complete removal upon rinsing

Ultra-Etch is a viscous 35% phosphoric acid solution. The optimum level of viscosity, along with the use of the Blue Micro or Inspirial Brush tip, facilitates precision placement and superior control. Contemporary studies demonstrate Ultra-Etch is the optimum "total etch" etchant.²

Ultra-Etch is just viscous enough to prevent migration on a vertical surface. However, it can penetrate into the smallest fissures or occlusal surfaces due to physical and chemical properties that promote capillary action. The optimum viscosity maintains a layer thick enough to prevent premature drying.



Ultra-Etch phosphoric acid is proven to be uniquely self-limiting in its depth of etch, with an average depth of 1.9µm using 15 second etch. Liquid phosphoric acid (37%) showed an average of 5.0µm at 15 seconds and a competing "polymer thickened" etchant a 4.8µm depth.³ Acids with this greater depth of etch go beyond the optimum level and increase the potential for incomplete resin impregnation.



Clinical experience and FE-SEM evaluations³ show 15 seconds etch time on both dentin and enamel provides optimal conditioning of both tissues. Air/water rinse. Blot excess water off leaving surface visibly wet.



Listed as a "CAN'T LIVE WITHOUT" product by a prominent independent research institute:⁴

#163 - Ultra-Etch Kit

- 4 - 1.2ml syringes
- 20 - Blue Micro tips



#167 - Ultra-Etch Econo Kit

- 20 - 1.2ml syringes
- 40 - Blue Micro tips



#383 - Ultra-Etch IndiSpense Kit

- 1 - 30ml IndiSpense syringe
- 20 - Blue Micro tips
- 20 - 1.2ml empty syringes



#685 - Ultra-Etch 30ml IndiSpense



Ultra-Etch 1.2ml Syringes

#164 - 4pk

#168 - 20pk

#1407 - 50pk



Shelf Life: 48 months.

¹ www.realityesthetics.com ² Perdigao J, Lambrechts P, Van Meerbeek B, and Vanherle G. A field emission SEM study of dentin etched with different phosphoric acid compositions and/or concentrations. Leuven, Belgium: Katholieke Universiteit Leuven, 1994. (Lit #7) ³ Perdigao J, Lambrechts P, Van Meerbeek B, Vanherle G. A study of the ultra-morphology of etched dentin. (Abstract #2982) J Dent Res. 1996;75:390 (Lit #41) ⁴ "Can't Live Without" Clinical Research Associates Newsletter, Volume 21, Issue 7, July, 1997

1 MINUTE ETCH - 1 MINUTE SILANE

Ultradent® Porcelain Etch & Silane



See page 37 for JetMix detail.

- Buffered, viscous 9% hydrofluoric acid designed for intraoral or extraoral etching
- Highest porcelain to resin bond strengths measured when Ultradent Porcelain Etch and Ultradent Silane are used with Peak LC Bond, PQ1 or PermaQuick Bonding Resin³
- Silane is a single component solution for application to porcelain following etching with Porcelain Etch

Ultradent Porcelain Etch is a buffered, viscous hydrofluoric acid designed for intraoral or extraoral porcelain etching. Ultradent Silane is a single component silane.

Highest bond values to porcelain occur with hydrofluoric acid etching. Use Ultradent Porcelain Etch to etch porcelain or old macro-filled composites prior to bonding and repair. Use when in-office etching of indirect restorations is required. Ultradent Porcelain Etch can be used for veneers, inlays, etc., followed by Ultradent Silane. Studies have demonstrated that Ultradent Silane, when used with Ultradent Porcelain Etch and Peak LC Bond, PQ1 or PermaQuick Bonding Resin, yield the highest bond strength to porcelain when compared with other porcelain bonding products.³

#5927 - Porcelain Etch Kit

- 2 - 1.2ml Porcelain Etch syringes
- 2 - 1.0ml Silane JetMix syringes
- 20 - Black Mini Brush tips
- 20 - Inspiral Brush tips



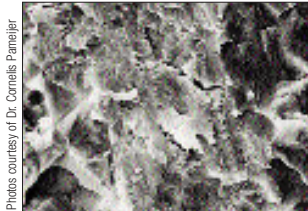
#406 - Porcelain Etch 1.2ml Syringes 2pk



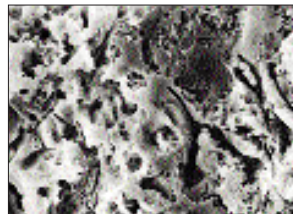
#5926 - Silane 0.5ml JetMix Syringes 4pk



Shelf Life: 36 months.



1. Diamond cut porcelain surface.



2. Same porcelain following one minute etch with Ultradent Porcelain Etch.



Hydrofluoric Ultradent Porcelain Etch is delivered from the Inspiral Brush tip to prepared porcelain after placement of EtchArrest barrier.



Apply Ultradent Silane followed by Ultra-Etch and Peak LC Bond Resin.

¹ www.realityesthetics.com ² Reality Ratings, Volume 20, 2006, pg 832. - Silane ³ Pameijer CH, Louw NP, Fischer D. Surface preparation and repair of fractured porcelain and its resistance to shear strength. J Amer Dent Assoc 127:203-209, 1996 (Lit #6) U.S. Patent Numbers: 4,997,371 and 5,269,684. International Patents Granted and Pending.

Ultra-Blend® plus

LINER

- Use as a thin cavity liner prior to placing either composite or amalgam, and for pulp capping with reversible pulpitis
- Controlled, precise syringe delivery eliminating mixing and cross contamination
- Water insoluble so it won't dissolve over time
- Light cured
- Biocompatible resins and calcium hydroxide
- 3-5MPa bond to dry dentin (without DBA)

Ultra-Blend plus flows best through the Black Micro tip. For larger areas, use the Black Mini tip.

#415 - Ultra-Blend plus Kit

- 2 - 1.2ml Ultra-Blend plus Dentin syringes
- 2 - 1.2ml Ultra-Blend plus Opaque White syringes
- 20 - Black Micro tips
- 20 - Black Mini tips



#416 - Ultra-Blend plus Dentin 1.2ml Syringes 4pk

#417 - Ultra-Blend plus Opaque White 1.2ml Syringes 4pk

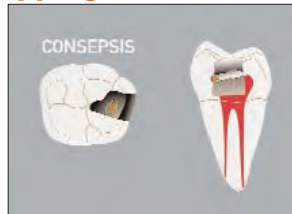


Shelf Life: 24 months. Refrigerate if not used on a daily basis.

Proven best for pulp capping.¹



1. Use Ultra-Blend plus for near pulp (pink) and small non-hyperemic exposure. If larger exposure and/or if hyperemic pulp, endodontic therapy should be initiated.



2. Apply Consensus antibacterial solution with plastic Blue Mini Dento-Infusor for 60 seconds with gentle scrubbing action. Gently air dry (don't rinse).



3. With Black Micro tip, first apply Ultra-Blend plus to dry dentin at exposure border (or over thin pink dentin); cover exposure and light cure. Minimize dentin coverage to maximize available dentin for bonding to.



4. Etch and bond as per Peak LC Adhesive System, PermaQuick or PQ1 bonding instructions and restore with composite.

¹ Pameijer CH, Stanley HR, Norval G. Pulp capping with a new adhesive light cured calcium hydroxide formula. (Abstract #757) J Dent Res 1998;77:200. (Lit # 43) U.S. Patent Numbers: 4,578,055; 4,941,873; 4,997,371 and 6,071,528. Other U.S. and International Patents Granted and Pending.

Ultradent® Porcelain Repair Kit

ETCH, SILANE, BOND RESIN & FLOWABLE COMPOSITE



- All the components needed for quality porcelain bonding and surface preparation prior to composite application
- Repairs easily and quickly with no mixing

Porcelain repair procedures are becoming more common. It is financially advantageous and less invasive to repair a chipped porcelain restoration instead of replacing it. The Ultradent Porcelain Repair Kit contains all the products and tips needed for use with composite to porcelain, porcelain to metal and porcelain to porcelain repairs.



Rated excellent by a prominent independent research institute!³

#1108 - Porcelain Repair Kit

- 1 - 1.2ml EtchArrest syringe
- 1 - 1.2ml OpalDam syringe
- 1 - 1.2ml PermaFlo Dentin Opaquer syringe
- 1 - 1.2ml PQ1 syringe
- 1 - 1.2ml Porcelain Etch syringe
- 1 - 1.2ml Ultradent Silane syringe
- 20 - Black Mini Brush tips
- 20 - Black Micro tips
- 20 - Micro 20g tips
- 20 - Inspirial Brush tips



Shelf Life: 18 months.

¹ www.realityesthetics.com ² Reality Ratings, Volume 20, 2006, pg 639. ³ Clinical Research Associates Newsletter, Volume 24, Issue 11, November 2000 U.S. Patent Nos.: 5,700,148 & 5,722,833. U.S. and Int'l Patents Pending.

Consepsis®

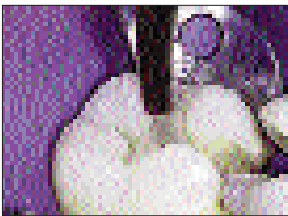
CHLORHEXIDINE ANTIBACTERIAL SOLUTION

- 2.0% chlorhexidine gluconate solution used to clean/disinfect before bonding
- Provides the longest and most effective antimicrobial activity²
- Reduces risk for recurrent caries
- Reduces potential for post operative sensitivity caused by residual bacteria
- Slightly higher bond strengths with many dentin bonding agents
- No bond strength compromise³

Chlorhexidine hand soaps can adversely affect bond strength with dentin bonding agents. Consepsis contains no surfactants or emollients that interfere with bond strength.⁴

Use prior to crown cementation, luting (provisional and/or permanent), and direct restorative placement. Consepsis helps address microorganisms in dentinal tubules. Minimize post-op pulpitis and sensitivity by thoroughly cleaning and disinfecting the preparation prior to sealing and restoring. Use Consepsis for procedural endodontic disinfection as well. For use with pulp capping (see Ultra-Blend *plus* section).

Use Consepsis prior to DBA application to disinfect root surface with sensitive root treatment or when bonding.



Disinfect preparations by applying Consepsis. Apply with the Blue Mini Dento-Infusor or Black Mini Brush tip.



Use to disinfect canals during endo when sodium hypochlorite has been used.

¹ www.realityesthetics.com. ² M. R. Leonardo, DDS, PhD, M. Tanomaru Filho, DDS, P. Nelson Filho, MSD, K/C. Bonifacio, MS, and I.Y. Ito, DDS, PhD In Vivo Antimicrobial Activity of 2% Chlorhexidine Used as a Root Canal Irrigating Solution J Endod; 1999, 25(3): 167 - 171 ³ Cao DS, Hollis RA, Christensen GJ, Christensen RP. Effect of tooth disinfecting procedures on dentin shear bond strength. (abstract #493) J Dent Res 1995; 74:73. (Lit #12) ⁴ Clinically significant research. Clinical Research Associates Newsletter 1994 Apr;18(4):3 U.S. Patent Numbers: 4,997,371 and 4,941,873. Other U.S. and International Patents Granted and Pending.



NOT AVAILABLE IN ALL COUNTRIES

#490 - Consepsis Kit

- 4 - 1.2ml syringes
- 20 - Blue Mini Dento-Infusor tips
- 20 - Black Mini Brush tips



#404 - Consepsis IndiSpense Kit

- 1 - 30ml IndiSpense syringe
- 10 - Blue Mini Dento-Infusor tips
- 10 - Black Mini Brush tips
- 20 - 1.2ml empty syringes



#687 - Consepsis 30ml IndiSpense



#491 - Consepsis 1.2ml Syringes 20pk

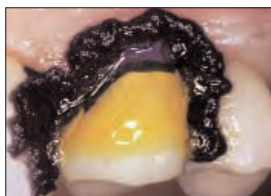


Shelf Life: 48 months.

EtchArrest®

ACID BARRIER/NEUTRALIZER

- Neutralizes acid etchants upon contact
- Contrasting color to tissues and acid etching agents
- Viscous enough for precise placement, yet flows into tiny irregularities
- Rinses off easily with water while protecting tissues from hydrofluoric acid
- Protect soft tissues and adjacent restorations when rubber dam placement is not practical



Use EtchArrest to protect adjacent porcelain and soft tissue from hydrofluoric acid. Etch dentin simultaneously with Ultra-Etch while etching porcelain with Ultradent Porcelain Etch to keep hydrofluoric off dentin (hydrofluoric will prevent quality adhesion to dentin and enamel). Rinse clean, apply Ultradent Silane, apply Peak LC Bond or PQ1 Bonding adhesive, apply PermaFlo Dentin Opaque Masking Resin (see PermaFlo) and restore with Vit-I-escence.



#625 - EtchArrest Kit

- 4 - 1.2ml syringes
- 20 - Black Micro tips



Shelf Life: 36 months.